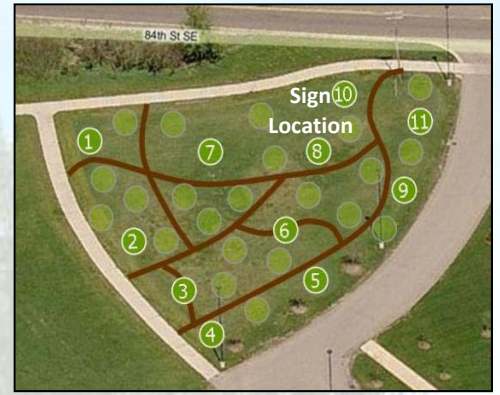




8555 Kalamazoo Ave. SE Caledonia, Michigan 49316
 Phone (616) 698-6604 Fax (616) 698-2490
www.gainestownship.org

Educational Grove

Donation Campaign for Prairie Wolf Park



In December of 2009, Gaines Charter Township was awarded \$1,375 in grant funding for an educational tree grove in Prairie Wolf Park. The Department of Natural Resources' Community Forestry Program awarded 35 communities grant money for tree planting, education and management.

The grove will include species tree signage for each tree, irrigation, and newly planted trees. The \$1,375 award was a portion of the requested grant amount, and the Township is seeking donations to assist with the remaining amount not received in the grant. The Township Board committed to \$2,825 for the grant application, and has since committed to up to an additional \$1,580 from the Park and Trail Fund to complete the project. A local resident has also donated \$500, and Everett's Landscaping has committed to \$500 worth of tree donations.



Prairie Wolf Park is a passive use park located at 84th St. and Kalamazoo Ave., behind Township Hall. The map and picture to the left provide an aerial of the park, and the grove location.

Those wishing to contribute to this project or make a general contribution may send donations to:

Gaines Charter Township Park & Trail Fund
 8555 Kalamazoo Ave. SE
 Caledonia, MI 49316

A minimum \$50 donation will allow for your name to be included on the main grove sign. These spots are on a first-come first-serve basis beginning March 1st, 2010. There are approximately eleven spaces available. If you are interested in having your name recognized, please contact Megan Sharp at 616-698-6640 or megan.sharp@gainestownship.org

Donations to a local government such as the Township are a charitable contribution for income tax purposes, and may qualify for a tax deduction. Please see your financial advisor for further information.

To receive up-to-date information on local park and recreation opportunities by e-mail, please send your name and e-mail address to parks.rec@gainestownship.org. E-mail and address information will be used solely by Gaines Charter Township and its employees for matters related to Township activities and public relation purposes. This information will not be sold or provided to any other third parties.